

**PRODUCT DESCRIPTION AND PACKAGING**

**Product Description**

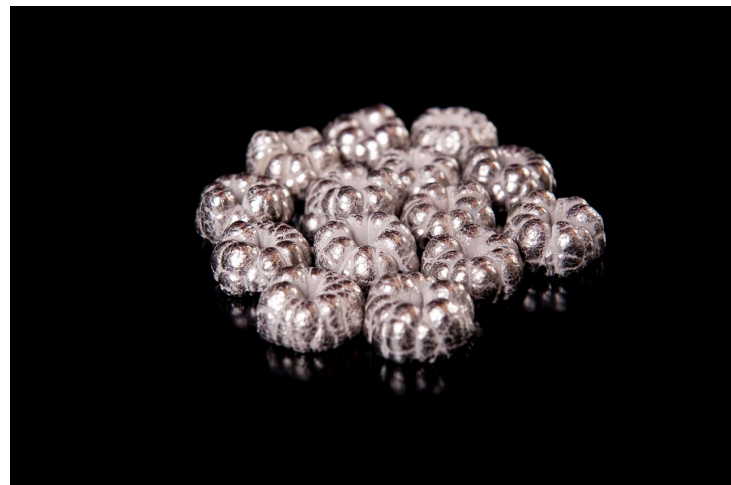
Nikkelverk Nickel CROWNS were specifically developed and patented by Xstrata Nickel to provide an improved alternative to sheared cathode squares for use in titanium baskets. Nickel CROWNS are hemispherical with a base diameter of approximately 22 mm.

The nickel CROWN shape provides smooth-flowing, easy handling properties and promotes good settling in anode baskets, important in preventing void formation and basket damage.

Electrolytic or high purity nickel continues to be preferred by most platers due to the low level of residuals. A preference for nickel CROWNS over other forms is the result of significant cost savings due to good dissolution and handling characteristics.

The smooth, rounded form of nickel CROWNS has allowed Xstrata Nickel to introduce greater versatility in packaging than is possible with competitive products and has been designed for improved operator efficiency.

Further information and assistance are available upon request and on the webpage [www.xstrata.com](http://www.xstrata.com).



**Typical Analysis**

|               |          |   |
|---------------|----------|---|
| Nickel _____  | > 99.98  | % |
| Carbon _____  | < 0.002  | % |
| Cobalt _____  | < 0.0002 | % |
| Copper _____  | < 0.0001 | % |
| Iron _____    | < 0.001  | % |
| Lead _____    | < 0.0002 | % |
| Sulphur _____ | < 0.0002 | % |
| Zinc _____    | < 0.0002 | % |

Nikkelverk NICKEL is guaranteed to meet the chemical requirements of BSI 375 grade R99.95, ISO 6283 grade R9995 und ASTM B39.

Bulk density:  
Approx. 4.9 kg/dm<sup>3</sup>

*Materials Safety Data Sheet available upon request.*



The Quality Management System for the production of nickel products at Xstrata Nickel's refinery located in Kristiansand, Norway is ISO 9001, ISO 14001 and OHSAS 18001 registered.

## Standard Packaging



- 4 x 250 kg steel drums, net weight 1,000 kg, strapped to a skidded wooden pallet.



- 100 x 10 kg polyethylene bags, net weight 1,000 kg, packed in a skidded wooden box.